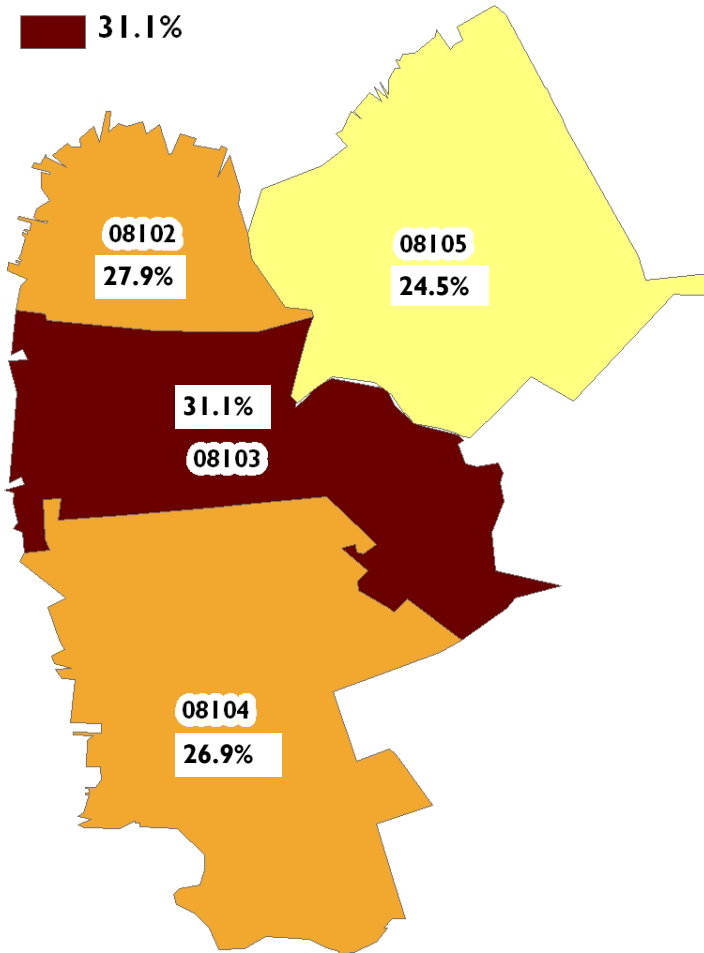
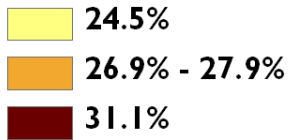


Chronic Disease in Camden

Diabetes, Asthma, and Congestive Heart Failure (July 2002 - July 2007)

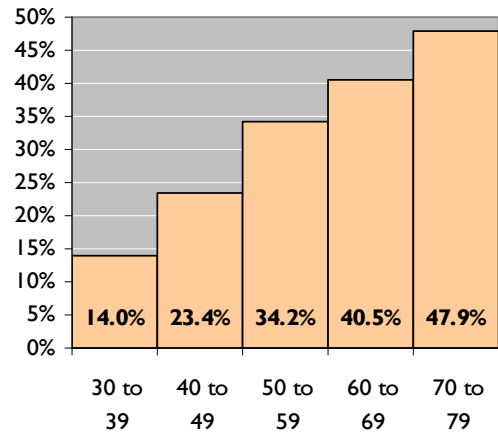
Chronic Disease Visits by Zip

Percent of Population with at least 1 Visit

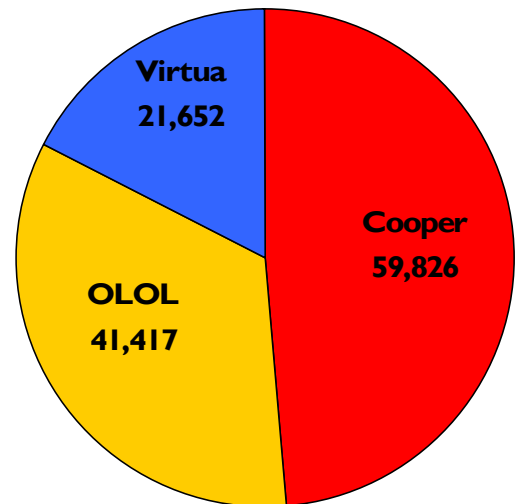


Chronic Disease Visits by Age

Percent of Population with at least 1 Visit



Chronic Disease Visits by Hospital



Number of Visits	Total Visits	Total Patients	Charges	Receipts
1 to 10	54,207	12,612	\$1,042,444,520	\$145,106,010
11 to 20	35,958	2,521	\$528,530,965	\$71,784,792
Over 20	32,730	960	\$407,663,357	\$51,105,098
TOTAL	122,895	16,093	\$1,978,638,841	\$267,995,901

July 2008



Camden Coalition of
Healthcare Providers
www.camdenhealth.org

Version 1.0
7-31-08



Chronic Disease in Camden (July 2008)

CAMConnect and the Camden Coalition of Health Care Providers are partnering to advance the health of Camden residents. These organizations have created a database that includes **every visit** to a Camden hospital between 2002 and mid-2007. This database includes:

- ☐ Billing and insurance information, including charges and receipts
- ☐ Visit information, including dates of admission and diagnosis codes
- ☐ Patient demographics, including name, age, and address

Through analysis of this database, it is possible to learn much about the health conditions and health behaviors of Camden residents. For instance, patients with chronic disease can be tracked longitudinally to determine hospital and emergency department (E.D.) utilization over a period of multiple years. This analysis presents some initial findings from investigation of diabetic patients.

The information in the Camden Health Database is treated with strict security, and individual patient-level information is not released.

	Visits	Patients	Visits / Patient
Chronic Disease	122,895	16,093	7.64
Overall	386,794	97,555	3.96

	Collection Rate
Chronic Disease	13.5%
Overall	13.5%

	E.D. Visits	Inpatient Visits	% Inpatient
Chronic Disease	91,033	31,862	26%
Overall	320,253	66,541	17%

Methods: Billing data was obtained separately from the three hospitals in Camden -- Cooper, Our Lady of Lourdes, and Virtua -- for the period from January 1, 2002 through July 31, 2007. Patient records were probabilistically linked using LinkageWiz software. Visits with a diagnosis of diabetes, asthma, or congestive heart failure were identified. These visits were then analyzed in the context of the larger patient record. The 122,895 visits for chronic disease include E.D. and inpatient visits for patients with a history of chronic disease, but, not all visits have a specific diagnosis code directly attributable to chronic disease.

For More Information

CAMConnect
 E & R Building, Suite 142
 401 Haddon Avenue
 Camden, NJ 08103
 Phone: (856) 968-9506
 ziegler@camconnect.org
 www.camconnect.org

Camden Coalition of Healthcare Providers
 E & R Building, Suite 142
 401 Haddon Avenue
 Camden, NJ 08103
 Phone: (856) 968-9507
 www.camdenhealth.org

The purpose of **CAMConnect** is to expand and democratize access to information for residents and organizations that live and work in the City of Camden.

The **Camden Coalition of Healthcare Providers** is a strategic initiative aimed at improving disease management in Camden City by increasing the capacity and accessibility of care at community-based primary care practices and the exploration of sustainable strategies of community health planning through dialogues and forging collaborative initiatives among key health stakeholders in the city.